

# State of Wyoming Corner Record

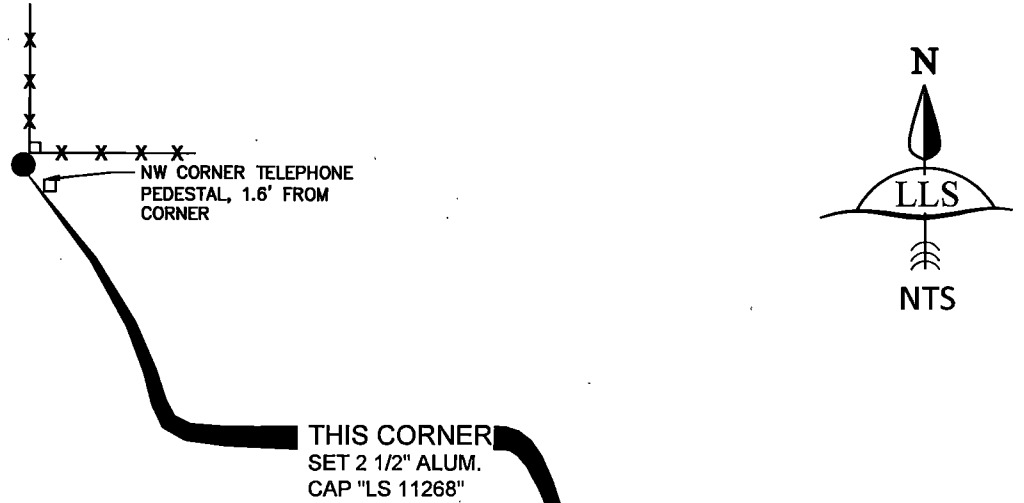
(In compliance with the **CORNER PERPETUATION AND FILING ACT**, Wyoming Statutes, 1997 Section 33-29-140 et. seq., and the Rules and Regulations of the Board of Professional Engineers and Professional Land Surveyors)

Record of original survey and citation of source of historical information (if corner is lost or obliterated). Description of corner monumentation evidence found and/or monument and accessories established to perpetuate the location of this corner. Sketch of relative location of monument, accessories, and reference points with course and distance to adjacent corner(s) (if determined in this survey).

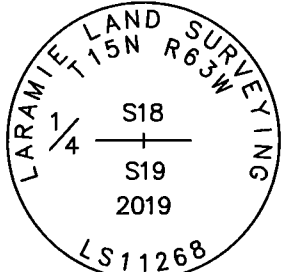
**Original Record:** (Alfred M. Rogers - 1871) Set a red sandstone 17x10x3 for 1/4 sec corner

**Evidence Found:** No evidence of original corner. After evaluating, accepted the fence corner as the best evidence of original corner.

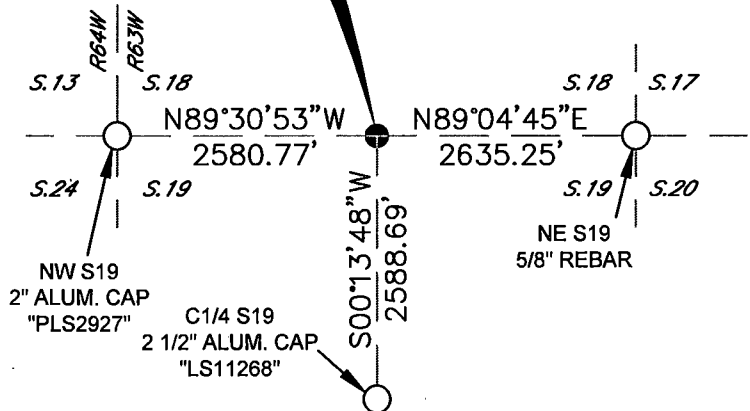
**Perpetuation:** At the found fence corner, I set a 2 1/2" aluminum cap, marked as shown below. Cap projects 0.2' above ground and is situated as shown below.



## Monument Inscription



2 1/2 INCH DIAMETER  
ALUMINUM CAP



Date of Field Work: 09-16-2019 Office Reference: Book M-1 Pg 8

## Cross Index Plat

|   |    |    |    |    |    |    |   |   |    |    |    |    |    |    |    |    |    |    |    |    |    |    |    |    |   |
|---|----|----|----|----|----|----|---|---|----|----|----|----|----|----|----|----|----|----|----|----|----|----|----|----|---|
| 1 | 2  | 3  | 4  | 5  | 6  | 7  | 8 | 9 | 10 | 11 | 12 | 13 | 14 | 15 | 16 | 17 | 18 | 19 | 20 | 21 | 22 | 23 | 24 | 25 |   |
| A |    |    |    |    |    |    |   |   |    |    |    |    |    |    |    |    |    |    |    |    |    |    |    |    | A |
| B |    |    |    |    |    |    |   |   |    |    |    |    |    |    |    |    |    |    |    |    |    |    |    |    | B |
| C | 6  | 5  | 4  | 3  | 2  | 1  |   |   |    |    |    |    |    |    |    |    |    |    |    |    |    |    |    |    | C |
| D |    |    |    |    |    |    |   |   |    |    |    |    |    |    |    |    |    |    |    |    |    |    |    |    | D |
| E |    |    |    |    |    |    |   |   |    |    |    |    |    |    |    |    |    |    |    |    |    |    |    |    | E |
| F |    |    |    |    |    |    |   |   |    |    |    |    |    |    |    |    |    |    |    |    |    |    |    |    | F |
| G | 7  | 8  | 9  | 10 | 11 | 12 |   |   |    |    |    |    |    |    |    |    |    |    |    |    |    |    |    |    | G |
| H |    |    |    |    |    |    |   |   |    |    |    |    |    |    |    |    |    |    |    |    |    |    |    |    | H |
| I |    |    |    |    |    |    |   |   |    |    |    |    |    |    |    |    |    |    |    |    |    |    |    |    | I |
| J |    |    |    |    |    |    |   |   |    |    |    |    |    |    |    |    |    |    |    |    |    |    |    |    | J |
| K |    |    |    |    |    |    |   |   |    |    |    |    |    |    |    |    |    |    |    |    |    |    |    |    | K |
| L | 18 | 17 | 16 | 15 | 14 | 13 |   |   |    |    |    |    |    |    |    |    |    |    |    |    |    |    |    |    | L |
| M |    |    |    |    |    |    |   |   |    |    |    |    |    |    |    |    |    |    |    |    |    |    |    |    | M |
| N |    |    |    |    |    |    |   |   |    |    |    |    |    |    |    |    |    |    |    |    |    |    |    |    | N |
| O |    |    |    |    |    |    |   |   |    |    |    |    |    |    |    |    |    |    |    |    |    |    |    |    | O |
| P | 19 | 20 | 21 | 22 | 23 | 24 |   |   |    |    |    |    |    |    |    |    |    |    |    |    |    |    |    |    | P |
| Q |    |    |    |    |    |    |   |   |    |    |    |    |    |    |    |    |    |    |    |    |    |    |    |    | Q |
| R |    |    |    |    |    |    |   |   |    |    |    |    |    |    |    |    |    |    |    |    |    |    |    |    | R |
| S |    |    |    |    |    |    |   |   |    |    |    |    |    |    |    |    |    |    |    |    |    |    |    |    | S |
| T | 30 | 29 | 28 | 27 | 26 | 25 |   |   |    |    |    |    |    |    |    |    |    |    |    |    |    |    |    |    | T |
| U |    |    |    |    |    |    |   |   |    |    |    |    |    |    |    |    |    |    |    |    |    |    |    |    | U |
| V |    |    |    |    |    |    |   |   |    |    |    |    |    |    |    |    |    |    |    |    |    |    |    |    | V |
| W |    |    |    |    |    |    |   |   |    |    |    |    |    |    |    |    |    |    |    |    |    |    |    |    | W |
| X |    |    |    |    |    |    |   |   |    |    |    |    |    |    |    |    |    |    |    |    |    |    |    |    | X |
| Y | 31 | 32 | 33 | 34 | 35 | 36 |   |   |    |    |    |    |    |    |    |    |    |    |    |    |    |    |    |    | Y |
| Z |    |    |    |    |    |    |   |   |    |    |    |    |    |    |    |    |    |    |    |    |    |    |    |    | Z |
| 1 | 2  | 3  | 4  | 5  | 6  | 7  | 8 | 9 | 10 | 11 | 12 | 13 | 14 | 15 | 16 | 17 | 18 | 19 | 20 | 21 | 22 | 23 | 24 | 25 |   |



BRIAN L. SCHMALZ  
PLS 11268

This corner record was prepared by me or under my direction and supervision.



RECEIVED 9/26/2019 AT 1:24 PM BK# 2640 PG# 225  
Debra K. Lee, CLERK OF LARAMIE COUNTY, WY PAGE 1 OF 1

REC # : 762390